

SUSTAINABILITY CHARTER

May 2016



Background

Ara has been actively incorporating the issue of sustainability into its operations for a number of years.

The following sustainability aspirations were adopted by the Council on 26 May 2014.

ENVIRONMENTAL:

We will continuously evaluate and improve our environmental impact across all areas of the organisation.

SOCIAL:

We are widely acknowledged as a values-led organisation, where sustainability is core to our beliefs and operating practice. We support and encourage sustainability initiatives and objectives, both on and off campus, and act as a key partner in community collaborations.

COMPLIANCE:

While key stakeholders including central and local government recognise us as the sector leader in adding value through sustainability, we believe compliance is the entry point and we can go further.

ECONOMIC:

We are an economically sustainable organisation that is efficient, productive and anticipates market needs, adapting to the changing economic environment in New Zealand and globally.

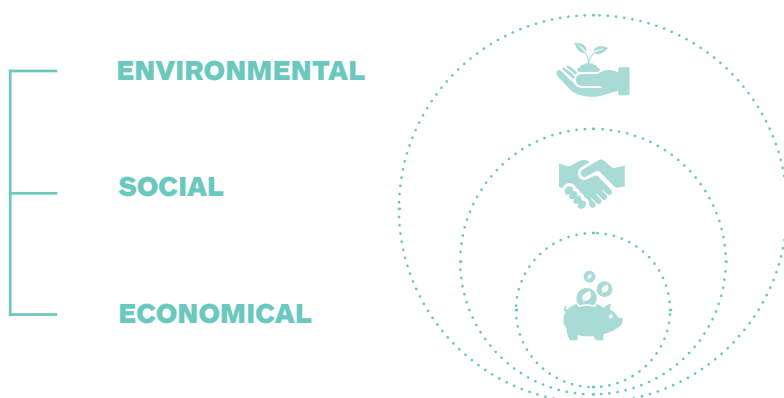
The work done to embed these principles and the establishment of Ara, has led to the development of this charter, which describes the definition, principles, roles and responsibilities through which we will achieve these sustainability aspirations.

Our definition of sustainability

At Ara becoming more sustainable means we:

- Recognise the connections between our economy and finances, our people, and our environment.
- Find the innovative solutions that best meet the demands of all three elements.
- Meet our needs today while guarding the ability of those who will come after us to meet their own needs.
- Build strength and resilience in our economy and communities, while improving the resilience of the natural environment these things rely on.

Sustainability at Ara



Our sustainability vision

On this waka we are all connected with each other; those who have been and those yet to come. We travel with energy toward sustainability. Our actions inspire and influence our communities, our future and our world to be prosperous. When the paddle dips in the water, the ripples travel far beyond our view.

Māori proverb

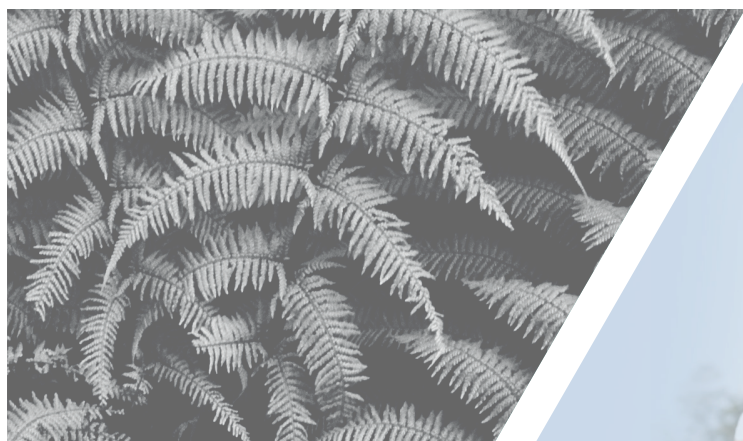
Ngaro atu te tangata, toitū te whenua, ko taua whenua, he whenua hāhā, he whenua haumako rānei.

Man is lost but the land remains, the state of that land (desolate or fertile and healthy) is undecided; it is up to us.

Principles for action

Ara commits to the following principles to become more sustainable:

1. Sustainability is embedded in every aspect of our operations, learning and teaching, and investments.
2. We enable our graduates and staff, and influence our communities and partners, to practice sustainably.
3. We take the visible actions and tell the stories that can make sustainability positive and meaningful for every person and group we impact.
4. We model leadership toward sustainability everyday in our: learning and teaching; resource and operational efficiency; and management and governance.
5. We build our learning environment to exemplify sustainability to all.
6. We use our external relationships and our purchasing power as opportunities toward sustainability, buying locally and seeking low-carbon solutions whenever feasible.
7. Our investments are intergenerationally focused and consider total lifetime costs and benefits, both internal and external, of purchase and ownership for current and future users.
8. We share our sustainability performance openly with our staff, students, and communities
9. We listen to our community, prioritising those material economic, environmental and social impacts that matter the most.
10. We consider wider impacts, both positive and negative, of our decisions, and the connections between our environment, people and economy.
11. We harness the innovation, resources and commitment of our sustainability champions, whoever and wherever they may be in Ara.
12. We collaborate with others and use globally recognised accreditation and assurance when this creates value for all involved.
13. Our council, staff, students and the partners and suppliers we choose to work with are all accountable for becoming more sustainable.
14. Our management systems, graduate profiles and reporting help us navigate on our sustainability journey.



Our roles and responsibilities under this charter

The Ara Council will:

- Maintain governance and oversight of sustainability to ensure the principles, vision and aspirations in this charter are realised.

The Chief Executive will:

- Ensure that this charter is given effect.

Te Kāhui Manukura (TKM) will:

- Be the governance group for strategic sustainability projects.

All managers will:

- Model leadership toward sustainability in their own work; and
- Ensure their staff are accountable for sustainable practice in their work as this is incorporated over time into the institute's capability and performance assessment framework.

All managers and staff will:

- Be accountable for their own sustainable practice, within the institute's capability framework; and
- Be supported by Ara in their own development and assessment toward sustainable practice.

All students will:

- Have the opportunity to graduate as sustainable practitioners.

External partners, contractors and suppliers to Ara will:

- Be required to support Ara by being open regarding the whole-of-life costs and benefits, both internal and external, of their goods and services as a condition for engaging with Ara.

Sustainability Strategy

The sustainability strategy will:

- Explain how the vision, principles, and aspirations in this charter will be achieved; and Be confirmed by TKM.

Reporting

The Ara value of 'trust', together with principle eight of the charter ('Sharing our performance openly'), means we will prioritise reporting and the development of sustainability key performance indicators (KPIs).

Contact

Ara Sustainability Manager

Shaun Bowler

E: shaun.bowler@ara.ac.nz

T: 03 940 8301

M: 021 800 690